



"Sandstone National Park "

WHAT'S NEARBY?

Pipestem State Park
New River Gorge Bridge



MILES

.5

KID FRIENDLY?

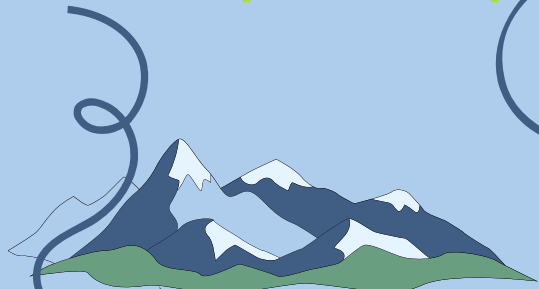
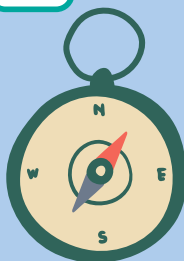


DOG FRIENDLY?



HIGHLIGHTS

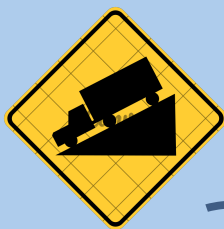
- Panoramic Waterfalls!
- Shelling
- Swimming
- Picnicking



TERRAIN

Wooden Boardwalk

Sand
Riverbanks



GRADE

Flat



PEOPLE METER

People-y & Crowded

BEST PART?

SHELLING

As the river flows North; there's many surprises to be found here.

PANORAMIC WATERFALLS

Get a view from every angle! It's a wide waterfall with much beauty to admire.

MEANDERING BOARDWALK

From the parking lot to the shores; Meander and explore! Spend a few hours getting lost around the Riverbanks.



TRAILS VISITED:

Boardwalk

Island Loop Trail



For more information:
www.acemindsetjourney.com