



"Hawks Nest State Park "

WHAT'S NEARBY?



MILES
1.8

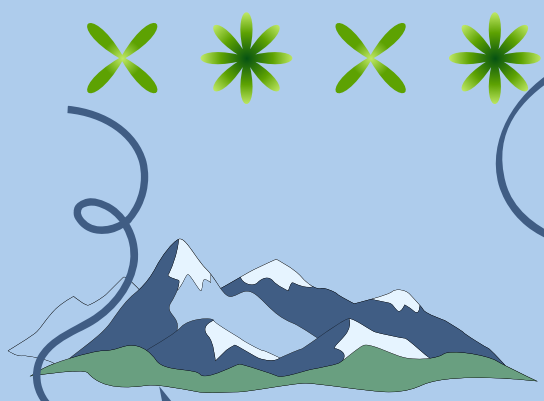
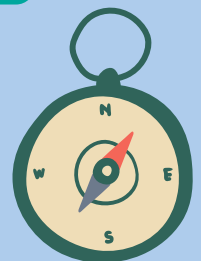
KID FRIENDLY? ☒ ☐

DOG FRIENDLY? ☐ ☒



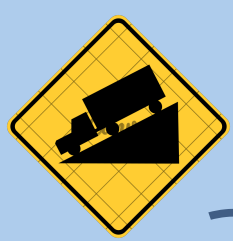
HIGHLIGHTS

- Bird's Eye Views
- Jet Boat Rides
- Aerial Tram
- FREE Continental Breakfast
- Waterfall Views
- Nature Museum
- Restaurant
- Playground



TERRAIN

Loose Gravel
Dry Dirt and Leaves



GRADE

Moderately Steep



PEOPLE METER

Mid-Level Crowd
Less Busy than NRG; much more busy than other WVSPs



BEST PART?

BIRD'S EYE VIEWS

Views of the second oldest river in the World; in a native historical natural setting.

OSPREY AND BIRDING

Bird Watchers, Nature Lovers, and Picture Takers alike will find joy in this park.

ADVENTURE EXCURSIONS

From the aerial tram in the sky, to the jet boats on the water; These excursions are packed with fun. Up and down; Adventure all around!



TRAILS VISITED:

GSYP Trail
Lovers Leap Trail

For more information:
www.acemindsetjourney.com