



# "Cedar Creek State Park "

## WHAT'S NEARBY?

- American Glass Museum
- Flatwoods Monster Museum
- Burnsville Waterfall



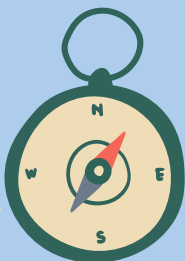
MILES  
**3 1/4**

KID FRIENDLY? ☒ ☐

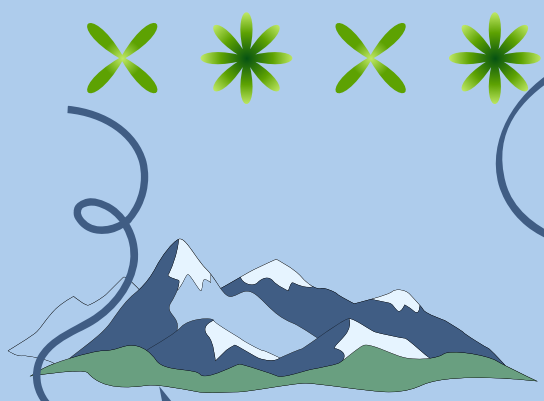
DOG FRIENDLY? ☒ ☐



## HIGHLIGHTS

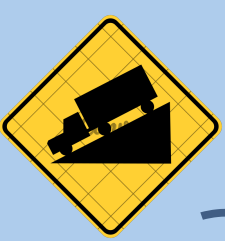


- Extremely quiet and peaceful
- Panoramic Mountain Views
- Beautiful Creekside Views
- THREE Fishing Ponds
- One-Room Schoolhouse
- Swimming Pools
- Mini Golf
- Tennis Courts



### TERRAIN

Leaves  
Shale  
Moss  
Thick Muddy Swamp



### GRADE

Very Steep  
Flat



### PEOPLE METER

Little to None



## BEST PART?

### PEACE AND QUIET

Cedar Creek State Park is such a quiet peaceful place. The Rolling Hills and Deep Hollers will make you feel at Home

### CREEK SWAMP MEANDER

The Fishermans Trail was a test of adaptability in a swamp-like setting.

### OLD SCHOOL HOUSE

The school house is so well preserved. It almost looks as if all the children have went home for the day.



## TRAILS VISITED:

Park View Trail  
Fishermans Trail



For more information:  
[www.acemindsetjourney.com](http://www.acemindsetjourney.com)